

## FP1 FOOT PEDAL

FP1 Foot pedals feature rugged sealed construction and are suitable for providing precise control in high duty cycle applications.



## SPECIFICATIONS

### GENERAL DATA

Type	Proportional
Output Options	Contacts & Potentiometer
Pedal Travel	25 degrees
Life	10 million cycles
Materials	Rugged cast aluminum construction & brass bearings.
Size	11.2" x 5.12" x 7.30"
Est Weight	6.25 lbs
Est. Shipping Weight	8 lbs.
Est. Shipping Dimensions	10 in. x 10 in. x 10 in.

### ENVIRONMENTAL DATA

IP Rating	IP42
Operating Temperature	-13 to +158 degrees F [-25 to +70 degrees C]

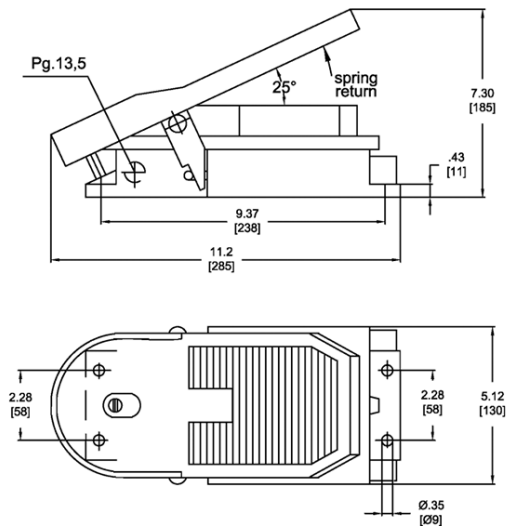
ELECTRICAL DATA

Contact Specifications	Switch Type: Double Pole Snap-In Contact Blocks
	Max. Number: Up to 3 contact blocks
	Max. Switching Capacity: Making - 100 amps Breaking - (0.7PF) 240V 80 amps
	Rating (AC): Continuous 16 amps @ 240V Resistive 8 amps @ 240V Inductive 6 amps @ 240V
	Termination: Captive Saddle Clamp
	Max. Wire Size: 12 AWG
Additional Specifications	Reference product literature for additional specifications

# Technical Drawings

## Dimensional

All dimensions in inches [mm] and are subject to change.



FP1 Overall Dimensions