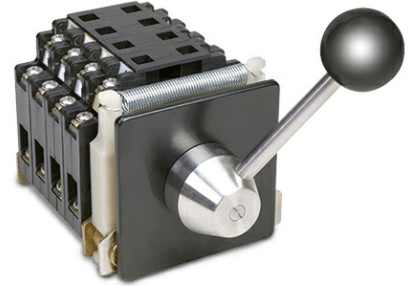


NS2-0 / NSB2-0 ROTARY SWITCH

NS2-0/NSB2-0 Rotary Master Switch features the same rugged design components and versatility as the NS2/NSB2 series of Joysticks.



SPECIFICATIONS

GENERAL DATA

Output Options	AC or DC Contacts, Potentiometer, Encoder & Transformer
Handle Action	Spring Return, Friction Brake or Maintained
Handle Travel	0-330 degrees Max. handle action in cast enclosure +/- 120 degrees
Max of Steps	Up to 7-0-7 or 0-16 positions
Handle Compatibility	Teardrop & chrome steel ball lever
Life	10 million cycles
Materials	Aluminum body and nickel chromium yoke.
Est. Shipping Weight	15-23 lbs.
Est. Shipping Dimensions	24 in. x 12 in. x 12 in.

MOUNTING DATA

Mounting Style	Panel (from below)
Mounting Footprint	4" x 4" See literature for additional mounting specifications

ENVIRONMENTAL DATA

IP Rating	Up to IP66 / Nema 4x (with cast enclosure & round nameplate)
Operating Temperature	-13 to +158 degrees F [-25 to +70 degrees C]
Storage Temperature	-40 to +158 degrees F [-40 to +70 degrees C]

ELECTRICAL DATA

Contact Specifications	Switch Type: Double Pole Contact Blocks
	Max. Number: Up to 10 contact blocks (20 circuits)
	Max. Switching Capacity: Making - 160 amps Breaking - (0.7PF) 240V 160 amps
	Rating (AC) NS2-0: Continuous 25 amps @ 600V Resistive 20 amps @ 240V Inductive 14 amps @ 240V
	Rating (DC) NSB2-0: Resistive 5 amps @ 250V Inductive 2 amps @ 250V
	Termination: Saddle Clamp
	Max. Wire Size: 12 AWG

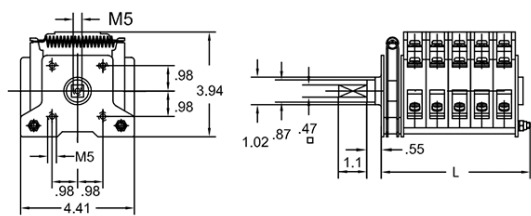
Additional
Specifications

Reference product literature for additional specifications

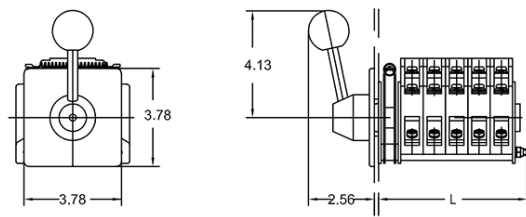
Technical Drawings

Dimensional

All dimensions in inches [mm] and are subject to change.



Mounting with 3.78 x 3.78" escutcheon plate

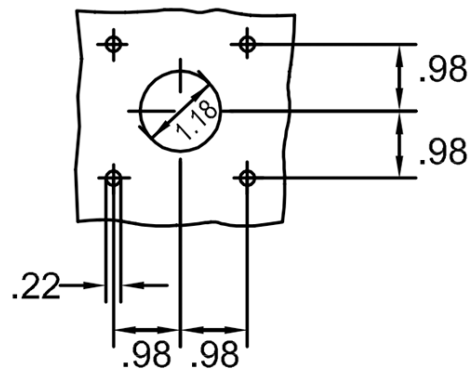


Number of double pole contact blocks											
"L" dim. w/detent	NS2O1_	NS2O2_	NS2O3_	NS2O4_	NS2O5_	NS2O6_	NS2O7_	NS2O8_	NS2O9_	NS2O10_	
"L" dim. w/sp.ret.	NSOO1_R		NSOO2_R	NSOO3_R	NSOO4_R	NSOO5_R	NSOO6_R	NSOO7_R	NSOO8_R	NSOO9_R	NS2O10_R
Length "L"	2.44	3.31	4.17	5.04	5.91	6.77	7.64	8.50	9.37	10.24	11.10

NS2-0 overall dimensions

Mounting

All dimensions in inches [mm] and are subject to change.



Panel mounting details