

## NSO-0 ROTARY SWITCH

NSO-0 Rotary Master Switch features the same rugged design components and versatility as the NSO series of Joysticks.



## SPECIFICATIONS

### GENERAL DATA

Output Options	Contacts, Potentiometer, Encoder, 4-20mA & Transformer
Handle Action	Spring Return, Friction Brake or Maintained
Handle Travel	+/- 36 degrees each axis
Max of Steps	Up to 7-0-7 or 0-16 positions
Handle Compatibility	Teardrop, pistol grip & chrome steel ball lever
Life	10 million cycles
Materials	Aluminum body and nickel chromium yoke.
Est. Shipping Weight	4 lbs.
Est. Shipping Dimensions	10 in. x 10 in. x 10 in.

## MOUNTING DATA

Mounting Style Panel (from below)

Mounting Footprint 2.84" x 2.84"  
See literature for additional mounting specifications

## ENVIRONMENTAL DATA

IP Rating Up to IP66 / Nema 4x (with cast enclosure & round nameplate)

Operating Temperature -13 to +158 degrees F [-25 to +70 degrees C]

Storage Temperature -40 to +158 degrees F [-40 to +70 degrees C]

## ELECTRICAL DATA

Switch Type:  
Double Pole Snap-In Contact Blocks

Max. Number:  
Up to 10 contact blocks (20 circuits)

Max. Switching Capacity:  
Making - 100 amps Breaking - (0.7PF) 240V 80 amps

Contact Specifications Rating (AC):  
Continuous 16 amps @ 240V  
Resistive 8 amps @ 240V  
Inductive 6 amps @ 240V

Termination:  
Captive Saddle Clamp

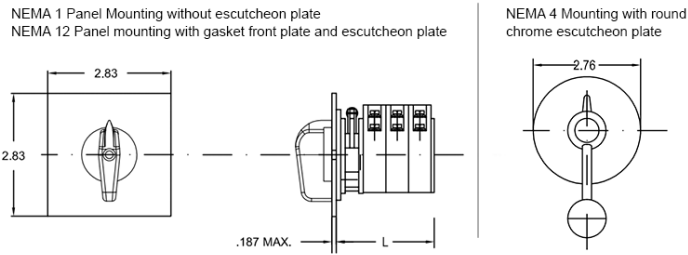
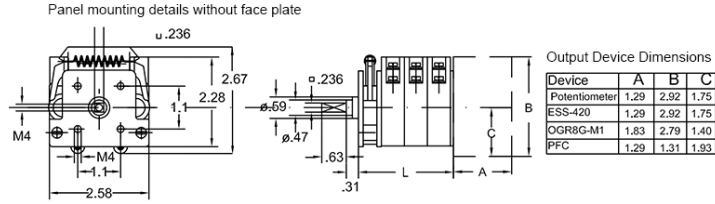
Max. Wire Size:  
12 AWG

Additional Specifications Reference product literature for additional specifications

# Technical Drawings

## Dimensional

All dimensions in inches [mm] and are subject to change.



Number of double pole contact blocks

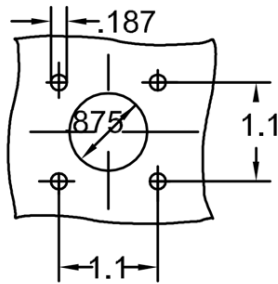
"L" dim. w/detent	NSOO1_	NSOO2_	NSOO3_	NSOO4_	NSOO5_	NSOO6_	NSOO7_	NSOO8_	NSOO9_	NSOO10_
"L" dim. w/sp.ret.		NSOO1_R	NSOO2_R	NSOO3_R	NSOO4_R	NSOO5_R	NSOO6_R	NSOO7_R	NSOO8_R	NSOO9_R
Length "L"	1.26	1.97	2.52	3.15	3.74	4.33	4.92	5.51	6.10	6.69

NSO-0 overall dimensions

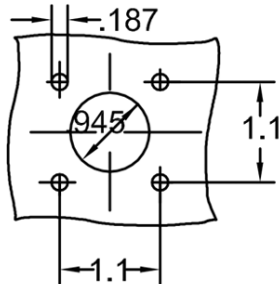
## Mounting

All dimensions in inches [mm] and are subject to change.

Standard Panel Mounting



Nema 4 Panel Mounting\*



\*For use with round chrome nameplate

## Standard and NEMA 4 panel mounting details