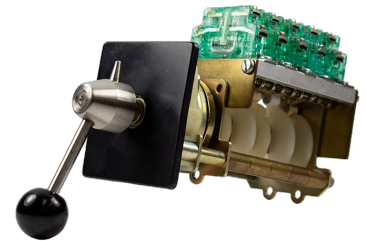


NSO-1 ROTARY SWITCH

NSO-1 Rotary DC Switches are characterized by their rugged construction and unmatched versatility.



SPECIFICATIONS

GENERAL DATA

Output Options	DC Contacts, Potentiometer, Encoder, 4-20mA & Transformer
Handle Action	Spring Return, Friction Brake or Maintained
Handle Travel	0 - 270 degrees with directly coupled potentiometer
Max of Steps	Up to 2-12 positions
Handle Compatibility	Teardrop, pistol grip & chrome steel ball lever
Life	10 million cycles
Materials	Aluminum body and nickel chromium yoke.
Est. Shipping Weight	4 lbs.
Est. Shipping Dimensions	10 in. x 10 in. x 10 in.

MOUNTING DATA

Mounting Style	Panel (from below)
Mounting Footprint	2.84" x 2.84" See literature for additional mounting specifications

ENVIRONMENTAL DATA

IP Rating	Up to IP66 / Nema 4x (with cast enclosure & round nameplate)
Operating Temperature	-13 to +158 degrees F [-25 to +70 degrees C]
Storage Temperature	-40 to +158 degrees F [-40 to +70 degrees C]

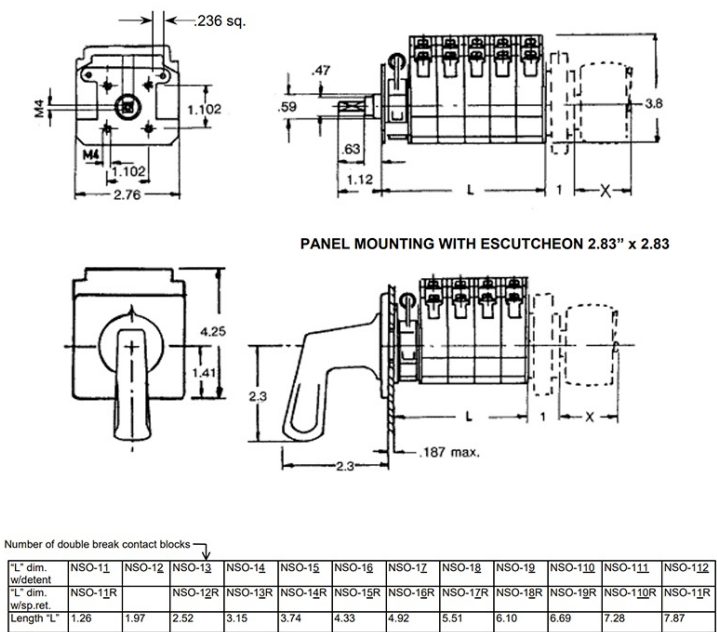
ELECTRICAL DATA

Contact Specifications	Switch Type: 1 N.O. and 1 N.C. double break nickel silver alloy contacts with non-teasable snap action mechanism
	Max. Number: Up to 6 contact blocks (12 circuits)
	Rating (DC w/ magnetic blow out): 10 amps @ 24VDC 6 amps @ 48 VDC 1.0 amps @ 125 VDC 0.6 amps @ 250 VDC
	Termination: Saddle Clamp
	Max. Wire Size: 12 AWG
Additional Specifications	Reference product literature for additional specifications.

Technical Drawings

Dimensional

All dimensions in inches [mm] and are subject to change.

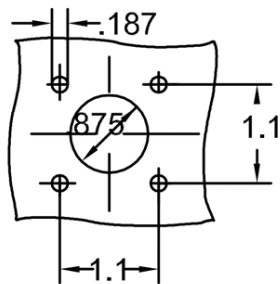


NSO-1 overall dimensions

Mounting

All dimensions in inches [mm] and are subject to change.

Standard Panel Mounting



Panel mounting details