

FS1 FINGER SWITCH

The FS1 rugged finger switch features a glass filled Zytel housing, non-ferrous components and when used with the IP66 boot the sealed construction makes this device suitable for corrosive and hostile environments. Smooth and precise operation along with robust design make the FS1 perfect for a wide variety of applications.



SPECIFICATIONS

GENERAL DATA

# of Axis	Single
Output Options	Hall-Effect
Joystick Action	Spring Return, Friction Brake
Handle Travel	+/- 25 degrees each axis
Life	20 million plus cycles
Materials	High strength, glass filled nylon housing.
Est. Shipping Weight	1 lbs.
Est. Shipping Dimensions	8 in. x 6 in. x 6 in.

MOUNTING DATA

Mounting Style	Panel (from below)
----------------	--------------------

Mounting Footprint	1.8" x 1.2" (without boot) 1.9" x 1.3" (with boot) See literature for additional mounting specifications
--------------------	----------------------------------------------------------------------------------------------------------------

ENVIRONMENTAL DATA

IP Rating	IP54 (standard) IP55 (without shaft seal) IP67 (with optional boot)
-----------	---------------------------------------------------------------------------

Operating Temperature	-13 to +158 degrees F [-25 to +70 degrees C]
-----------------------	----------------------------------------------

Storage Temperature	-40 to +158 degrees F [-40 to +70 degrees C]
---------------------	----------------------------------------------

ELECTRICAL DATA

Hall-Effect Specifications	<p>Supply Voltage: 4.5 to 5.5 VDC</p> <p>Output Voltage: Ratiometric 0.5 - 2.5 - 4.5 +/- 0.15V @ 5.0V supply Additional supply and output options available</p> <p>Output Current: 10mA</p> <p>Power Consumption: 20 mA @ full load</p> <p>Termination: 24 AWG wire 12" leads with Molex connector</p> <p>EMC Emissions: Complies with EN61000-6-4:2007 Class A Group 1, 80-1000 MHz</p> <p>EMC Immunity: Complies with or exceeds EN61000-6-2:2005, expanded to include: RFI Immunity of 100 V/M @ 80-1000 MHz ESD Immunity of 15Kv air, 8Kv contact</p>
----------------------------	-----------------------------------------------------------------------------------------------------------------------------------------------------------------------------------------------------------------------------------------------------------------------------------------------------------------------------------------------------------------------------------------------------------------------------------------------------------------------------------------------------------------------------------------------------------------------------------

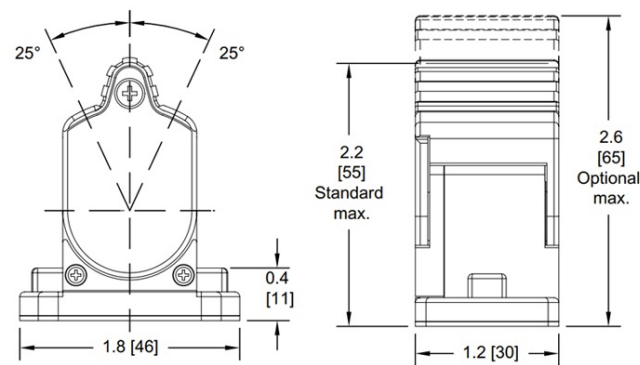
Additional
Specifications

Reference product literature for additional specifications

Technical Drawings

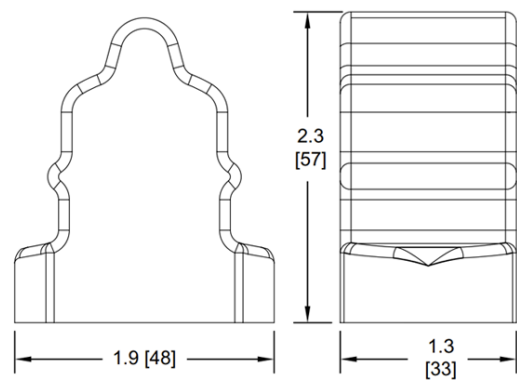
Dimensional

All dimensions in inches [mm] and are subject to change.



FS1 dimensions

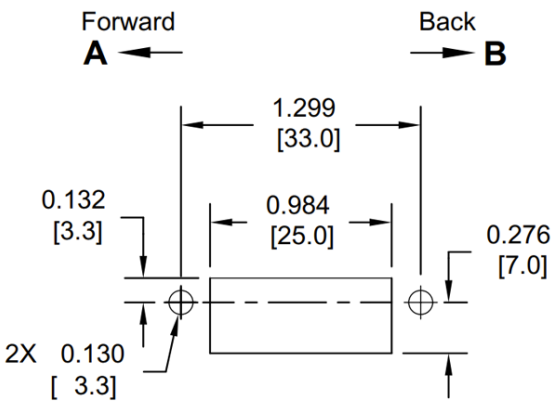
All dimensions in inches [mm] and are subject to change.



IP67 boot option dimensions

Mounting

All dimensions in inches [mm] and are subject to change.



Panel mounting (Mounts from below)

Wiring

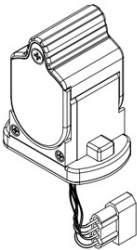
Wiring
4.5 to 5.5 VDC Supply:

PIN	COLOR	FUNCTION
1	ORN	+5.00 VDC
2	GRN	Ground
3	BLU	Signal out
4	WHT	Redundant signal out (optional)

7-30 VDC Supply:

PIN	COLOR	FUNCTION
1	YEL	+7-30 VDC
2	GRN	Ground
3	BLU	Signal out

Connections
4 Position MOLEX with male contacts mates with connector 03-06-2042 and female contacts 02-06-1103 (24-18 AWG).



Wiring & connection details