

M4 B/B MINI JOYSTICK

The M4 B/B is a compact finger operated joystick designed specifically for bang / bang (on / off) operation. Available in single or dual axis control, the M4 B/B features a glass-filled Zytel housing and non-ferrous components making it suitable for corrosive and hostile environments.



SPECIFICATIONS

GENERAL DATA

# of Axis	Single or Dual
Output Options	Microswitches
Joystick Action	Spring Return
Handle Travel	+/- 15 degrees each axis
Gate	Open or Cross
Handle Compatibility	Tapered, 2 piece, push button, or mechanical interlock
Life	20 million cycles
Materials	High strength, glass filled nylon housing.
Est. Shipping Weight	2 lbs.
Est. Shipping Dimensions	8 x 6 x 6 in.

MOUNTING DATA

Mounting Style	Panel (from below)
Mounting Footprint	1.9" x 1.9" See literature for additional mounting specifications

ENVIRONMENTAL DATA

IP Rating	IP54
Operating Temperature	-13 to +158 degrees F [-25 to +70 degrees C]
Storage Temperature	-40 to +158 degrees F [-40 to +70 degrees C]

ELECTRICAL DATA

Contact Specifications	Switch Type: SPDT (Form C) V Series Microswitches
	Max. Number: Up to 2 per axis
	Current Rating (AC): 11A
	Voltage Rating (AC): 250
	Current Rating (DC): 6A
	Voltage Rating (DC): 12 - 24
	Termination: .187" x .20" male quick connect

Max. Wire Size:
18 AWG

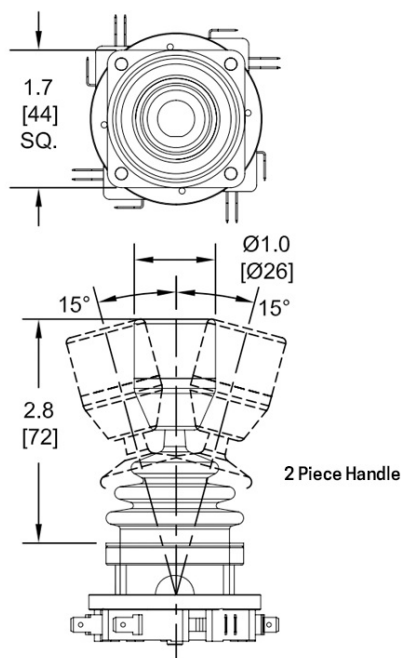
Additional
Specifications

Reference product literature for additional specifications

Technical Drawings

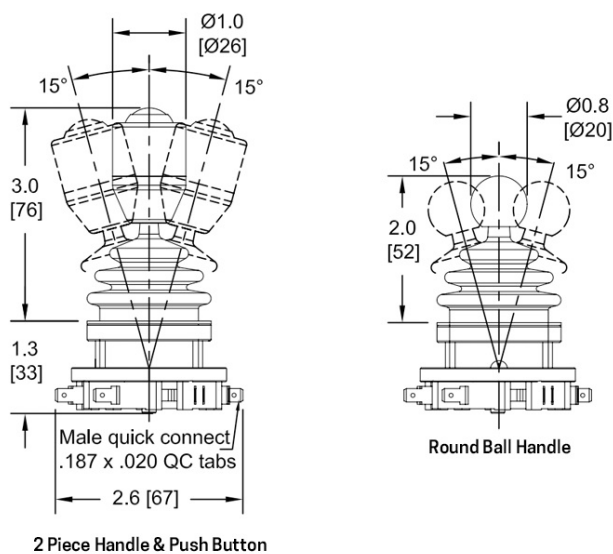
Dimensional

All dimensions in inches [mm] and are subject to change.



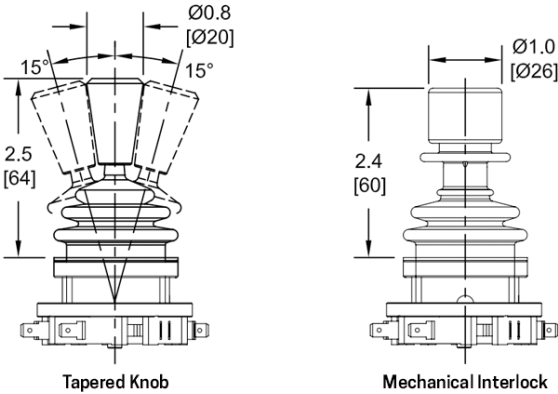
M4 dimensions. Shown with 2 piece handle.

All dimensions in inches [mm] and are subject to change.



Push Button handle and round ball handle dimensions

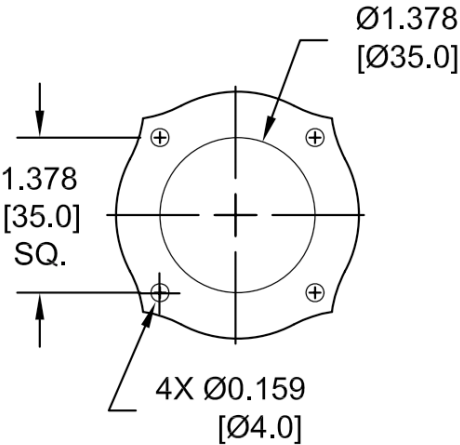
All dimensions in inches [mm] and are subject to change.



Tapered knob and mechanical interlock handle dimensions

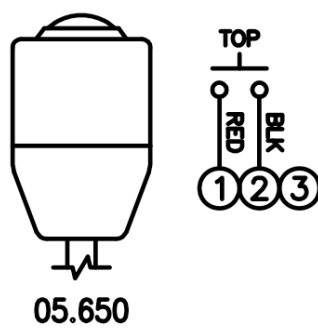
Mounting

All dimensions in inches [mm] and are subject to change.



Panel mounting details (mounts from below)

Wiring



Push button wiring details